

Diesel Parts & Service



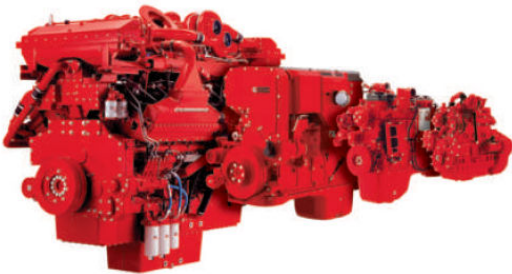
EVERY SOLUTION.



Industrial Engines

Index

Industrial Diesel Engine Range	P 3
Industrial Diesel Engine Specifications	P 4
Intermittent Diesel Engine Ratings	P 5
Continuous Diesel Engine Ratings	P 6
Custom Pak Description and Scope	P 7
Custom Pak Engine Description	P 8
Custom Pak Control Panels and Options	P 9
Engine Accessories	P10
Cummins Fire Pump Duty Diesel Engines	P11
Cummins ReCon	P12
FSR Series Self priming Pumpsets 6" and 8"	P13
TS & TSH Heavy Duty Industrial Trash and Sewage Pumpsets 3" to 10"	P14
HB & HW End Suction Centrifugal Pumpsets 8" to 32"	P15
SC Series Split Case Pumpsets 10" to 16"	P16
SC Series Split Case Pumpsets 24" to 48"	P17
ISO Series End Suction Pumpsets 2.5" to 6" 2800pm & 2200rpm	P18
ISO Series End Suction Pumpsets 3" to 10" 1800rpm	P19
Slurry Pump Pumpsets 2" to 8"	P20
Slurry Pump Pumpsets 10" to 12"	P21
Onan Petrol Powered Generator sets	P22
Engine Parts	P23
Oil and Coolant	P24



Terms

Prices are ex our works Brisbane. Diesel Parts and Service Pty Ltd. (A.C.N. 009 818 848) reserves the right to change specifications, pricing or availability without prior notice, or incurring liability of any kind. Listed retail prices offered as a guide only, and technical details must be confirmed where safety and performance are critical. Prices and specifications are subject to change without notice, and sales are subject to our "Condition of Sales", available on request. E & O.E.



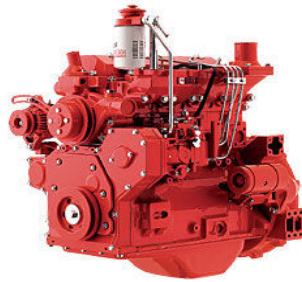
Cummins Diesel Engine Range

A Series



20hp to 60hp

B3.3 / QSB3.3



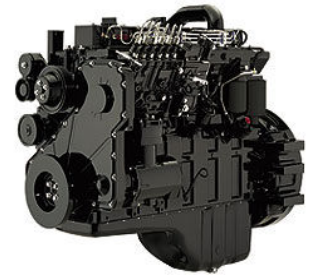
40hp to 100hp

B / QSB



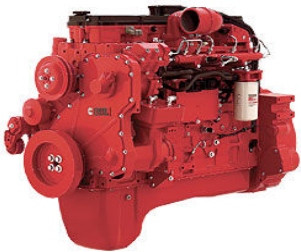
50hp to 260hp

C8.3 / QSC8.3



180hp to 330hp

QSL9



270hp to 350hp

**Every Job
Every Site
Every Challenge
Every Solution
Every Time**

M11 & QSM11



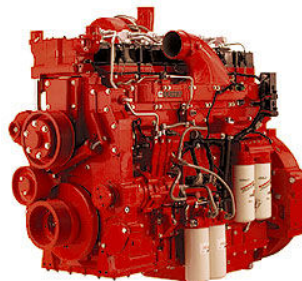
240hp to 400hp

QSX15



375hp to 560hp

QSK19



450hp to 760hp

QSK23



700hp to 950hp

QST30



780hp to 1050hp

K38 / QSK38



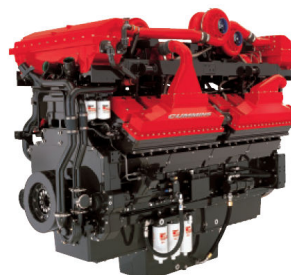
780hp to 1500hp

K50 / QSK50



1250hp to 2000hp

QSK 45-60



1350hp to 2700hp

QSK78



2800hp to 3500hp

For Industrial Applications

DIESEL PARTS & SERVICE



Engine Specifications

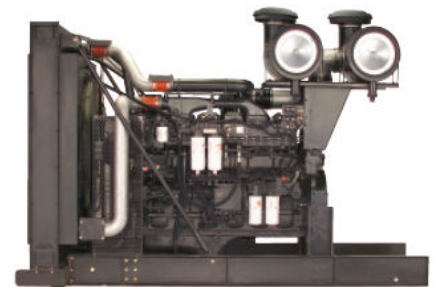
Model	Type	Disp Ltrs	Bore x Stroke	Intermittent Power rating up to	Continuous Power rating up to
A1700	3 NA	1.7	88 X 94 mm	38 hp (28 kW) / 2800 rpm	30 hp (22 kW) / 2800 rpm
A2300	4 NA	2.3	88 X 94 mm	50 hp (37 kW) / 2800 rpm	40 hp (30 kW) / 2800 rpm
A2300T	4 T	2.3	88 X 94 mm	60 hp (45 kW) / 2800 rpm	48 hp (36 kW) / 2800 rpm
B3.3-65	4 NA	3.3	95 X 115 mm	65 hp (48 kW) / 2600 rpm	50 hp (37 kW) / 2200 rpm
B3.3T-85	4 T	3.3	95 X 115 mm	85 hp (63 kW) / 2600 rpm	70 hp (52 kW) / 2200 rpm
QSB3.3	4 TC	3.3	95 X 115 mm	99 hp (74 kW) / 2600 rpm	80 hp (60 kW) / 2200 rpm
4B3.9	4 NA	3.9	102 X 120 mm	80 hp (60 kW) / 2500 rpm	60 hp (45 kW) / 2200 rpm
4BT3.9	4 T	3.9	102 X 120 mm	110 hp (82 kW) / 2500 rpm	90 hp (67 kW) / 2200 rpm
4BTA3.9	4 TA	3.9	102 X 120 mm	130 hp (97 kW) / 2500 rpm	110 hp (82 kW) / 2200 rpm
6BT5.9	6 T	5.9	102 X 120 mm	165 hp (123 kW) / 2500 rpm	135 hp (101 kW) / 2200 rpm
6BTA5.9	6 TA	5.9	102 X 120 mm	200 hp (149 kW) / 2500 rpm	150 hp (112 kW) / 2200 rpm
QSB4.5	4 TC	4.5	102 X 137 mm	160 hp (119 kW) / 2500 rpm	130 hp (97 kW) / 2200 rpm
QSB6.7	6 TC	6.7	102 X 137 mm	260 hp (194 kW) / 2500 rpm	203 hp (151 kW) / 2000 rpm
6CTA8.3	6 TA	8.3	114 X 135 mm	260 hp (194 kW) / 2200 rpm	215 hp (160 kW) / 2200 rpm
QSC8.3	6 TC	8.3	114 X 135 mm	305 hp (227 kW) / 2200 rpm	245 hp (183 kW) / 1800 rpm
QSL9	6 TC	8.9	114 X 144 mm	325 hp (242 kW) / 2100 rpm	300 hp (224 kW) / 1800 rpm
M11-300	6 TC	10.8	125 X 147 mm	300 hp (224 kW) / 2100 rpm	253 hp (189 kW) / 1800 rpm
M11-350	6 TC	10.8	125 X 147 mm	350 hp (261 kW) / 2100 rpm	281 hp (210 kW) / 1800 rpm
QSM11	6 TC	10.8	125 X 147 mm	400 hp (298 kW) / 2100 rpm	360 hp (269 kW) / 1800 rpm
QSX15	6 TC	15	137 X 169 mm	540 hp (403 kW) / 2100 rpm	510 hp (380 kW) / 1800 rpm
QSK19	6 TC	19	6.25" x 6.25"	760 hp (567 kW) / 2100 rpm	600 hp (448 kW) / 1800 rpm
QSK23	6 TC	23	170 X 170 mm	950 hp (708 kW) / 2100 rpm	760 hp (567 kW) / 1800 rpm
QST30	V12 TC	30	140 X 165 mm	1050 hp (783 kW) / 2100 rpm	850 hp (634 kW) / 1800 rpm
KT38	V12 T	38	6.25" X 6.25"	925 hp (690 kW) / 1900 rpm	780 hp (582 kW) / 1800 rpm
KTA38	V12 TA	38	6.25" X 6.25"	1200 hp (895 kW) / 1900 rpm	960 hp (715 kW) / 1800 rpm
QSK38	V12 TC	38	6.25" X 6.25"	1500 hp (1119 kW) / 1900 rpm	1260 hp (940 kW) / 1800 rpm
KTA50	V16 TA	50	6.25" X 6.25"	1600 hp (1194 kW) / 1900 rpm	1250 hp (932 kW) / 1800 rpm
KTAA50	V16 TA	50	6.25" X 6.25"	1800 hp (1343 kW) / 1900 rpm	1500 hp (1118 kW) / 1800 rpm
QSK50	V16 TC	50	6.25" X 6.25"	2000 hp (1491 kW) / 1900 rpm	1400 hp (1044 kW) / 1800 rpm
QSK45	V12 TC	45	159 X 190 mm	2000 hp (1491 kW) / 1900 rpm	1500 hp (1119 kW) / 1800 rpm
QSK60	V16 TC	60	159 X 190 mm	2700 hp (2013 kW) / 1900 rpm	2250 hp (1678 kW) / 1800 rpm
QSK78	V18 TC	78	170 X 190 mm	3500 hp (2610 kW) / 1900 rpm	2835 hp (2151 kW) / 1800 rpm



QSX15 – 540 hp



QSK19 – 760 hp



QSK23 – 950 hp

Intermittent Rating



Model	Power Rating	1500 rpm	1600 rpm	1800 rpm	1900 rpm	2000 rpm	2100 rpm	2200 rpm	2400 rpm	2500 rpm	2600 rpm	2800 rpm
		hp (kW)	hp (kW)	hp (kW)	hp (kW)	hp (kW)	hp (kW)	hp (kW)	hp (kW)	hp (kW)	hp (kW)	hp (kW)
A1700	38 hp	23 (17)	25 (19)	28 (21)	29 (22)	31 (23)	31 (23)	32 (24)	34 (25)	35 (26)	35 (26)	38 (28)
A2300	50 hp	31 (23)	34 (25)	38 (28)	39 (29)	40 (30)	41 (31)	43 (32)	46 (34)	47 (35)	48 (36)	50 (37)
A2300T	60 hp	38 (28)	42 (31)	46 (34)	48 (36)	50 (37)	52 (39)	54 (40)	56 (42)	57 (43)	59 (44)	60 (45)
B3.3-65	65 hp	45 (34)	48 (36)	53 (40)	55 (41)	56 (42)	58 (43)	60 (45)	63 (47)	63 (47)	65 (48)	
B3.3T-85	85 hp	61 (46)	66 (49)	71 (53)	74 (55)	76 (57)	78 (58)	80 (60)	83 (62)	84 (63)	85 (63)	
QSB3.3 -T3	99 hp	87 (65)	93 (69)	97 (72)	98 (73)	99 (74)	99 (74)	99 (74)	99 (74)	99 (74)	99 (74)	
4B3.9	76 hp	52 (39)	56 (42)	62 (46)	64 (48)	67 (50)	70 (52)	72 (54)	74 (55)	76 (57)		
4BT3.9	100 hp	74 (55)	79 (59)	85 (63)	87 (65)	90 (67)	91 (68)	94 (70)	97 (72)	100 (75)		
4BTA3.9	125 hp	100 (75)	104 (78)	113 (84)	117 (87)	120 (90)	123 (92)	125 (93)				
6BT5.9	150 hp	119 (89)	125 (93)	134 (100)	138 (103)	142 (106)	146 (109)	150 (112)	150 (112)	150 (112)		
6BTA5.9	177 hp	139 (104)	142 (106)	150 (112)	154 (115)	158 (118)	162 (121)	166 (124)	173 (129)	177 (132)		
QSB4.5 -T3	160 hp	131 (98)	138 (103)	152 (113)	158 (118)	165 (123)	163 (122)	160 (119)				
QSB6.7 -T3	260 hp	208 (155)	219 (163)	236 (176)	244 (182)	252 (188)	258 (192)	264 (197)	265 (198)	260 (194)		
6CTA8.3	260 hp	239 (178)	249 (186)	260 (194)	261 (195)	263 (196)	261 (195)	260 (194)				
QSC8.3 -T3	305 hp	291 (217)	303 (226)	327 (244)	330 (246)	333 (248)	319 (238)	305 (227)				
QSL9 -T3	325 hp	300 (224)	313 (233)	342 (255)	350 (261)	347 (259)	325 (242)					
M11-300	300 hp	277 (207)	286 (213)	298 (222)	299 (223)	299 (223)	300 (224)					
M11-350	350 hp	298 (222)	311 (232)	330 (246)	337 (251)	344 (257)	350 (261)					
QSM11	400 hp	384 (286)	391 (292)	402 (300)	403 (301)	403 (301)	400 (298)					
QSX15	540 hp	488 (364)	515 (384)	550 (410)	557 (415)	556 (415)	540 (403)					
QSK19	760 hp	650 (485)	688 (513)	755 (563)	760 (567)	760 (567)	760 (567)					
QSK23	950 hp	806 (601)	837 (624)	891 (664)	913 (681)	933 (696)	950 (708)					
QST30	1050 hp	919 (685)	978 (729)	1001 (746)	1021 (761)	1035 (772)	1050 (783)					

Higher and or lower intermittent power ratings may be available for the above models. Please check with DPS for selection. Larger power engines up to 3500 hp available. Please check with DPS for selection.



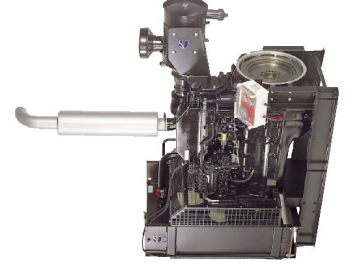
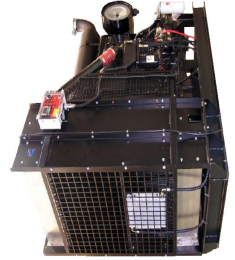


Continuous Rating



Model	Power Rating	1500 rpm hp (kW)	1600 rpm hp (kW)	1700 rpm hp (kW)	1800 rpm hp (kW)	1900 rpm hp (kW)	2000 rpm hp (kW)	2200 rpm hp (kW)	2400 rpm hp (kW)	2600 rpm hp (kW)	2800 rpm hp (kW)
A1700	30 hp	18 (13)	20 (15)	21 (15)	22 (16)	23 (17)	24 (18)	25 (19)	27 (20)	28 (21)	30 (22)
A2300	40 hp	24 (18)	27 (20)	28 (21)	30 (22)	31 (23)	32 (23)	34 (25)	36 (27)	38 (28)	40 (30)
A2300T	48 hp	30 (22)	33 (24)	34 (25)	36 (27)	38 (28)	40 (30)	43 (32)	45 (33)	47 (35)	48 (36)
B3.3-65	50 hp	38 (28)	41 (30)	43 (32)	45 (34)	47 (35)	48 (36)	50 (37)			
B3.3T-85	70 hp	50 (37)	55 (41)	58 (43)	61 (46)	63 (47)	65 (49)	70 (52)			
QSB3.3-T3	80 hp	76 (57)	78 (58)	79 (59)	80 (60)	80 (60)	80 (60)	80 (60)			
4B3.9	60 hp	44 (33)	47 (35)	49 (37)	52 (39)	54 (40)	56 (42)	60 (45)			
4BT3.9	80 hp	63 (47)	67 (50)	70 (52)	72 (54)	75 (56)	77 (58)	80 (60)			
4BTA3.9	99 hp	81 (60)	87 (65)	92 (68)	96 (72)	99 (74)					
6BT5.9	120 hp	95 (71)	100 (74)	104 (78)	107 (80)	110 (82)	114 (85)	120 (90)			
6BTA5.9	133 hp	111 (83)	114 (85)	116 (86)	120 (90)	123 (92)	127 (95)	133 (99)			
QSB4.5-T3	130 hp	131 (98)	134 (100)	137 (102)	140 (104)	140 (104)	140 (104)	130 (97)			
QSB6.7-T3	203 hp	199 (148)	205 (153)	205 (153)	205 (153)	204 (152)	203 (151)				
6CTA8.3	208 hp	191 (142)	200 (149)	208 (155)	208 (155)	209 (156)	210 (157)	208 (155)			
QSC8.3-T3	245 hp	238 (177)	244 (182)	245 (183)	245 (183)						
QSL9-T3	300 hp	286 (213)	297 (221)	299 (223)	300 (244)						
M11-300	253 hp	235 (176)	243 (181)	250 (186)	253 (189)						
M11-350	281 hp	253 (189)	264 (197)	273 (204)	281 (210)						
QSM11	360 hp	345 (257)	352 (262)	357 (266)	360 (268)						
QSX15	510 hp	498 (371)	515 (384)	531 (396)	510 (380)						
QSK19	600 hp	557 (415)	579 (432)	594 (443)	600 (448)						
QSK23	760 hp	694 (518)	718 (535)	739 (551)	760 (567)						
QST30	850 hp	785 (585)	815 (608)	833 (621)	850 (634)						

Higher and or lower continuous power ratings may be available for the above models. Please check with DPS for selection. Larger power engines up to 2835 hp are available. Please check with DPS for selection.





Cummins Custom Pak

Cummins Custom Pak – Engine power unit with all major components like heavy duty radiator package, steel base mounting arrangement, control panel, air cleaner and muffler, etc are all selected by Cummins to provide a total package to suit your requirement.

You can get “Standard Custom Pak Scope” or a **Specialised Scope** engine power unit to suit your requirements.

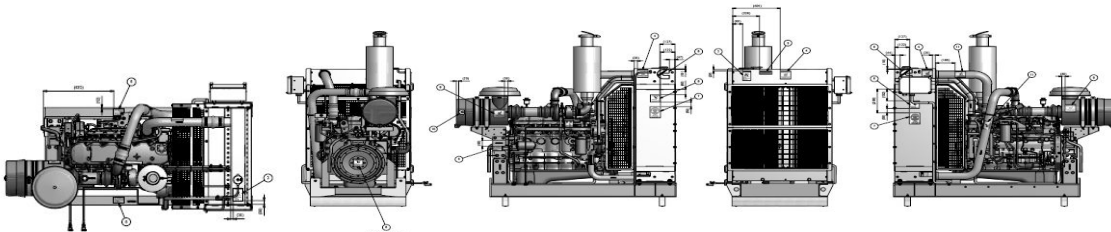
Std Custom Pak Scope	Type	Intermittent Power	Continuous Power	Std Voltage
C/Pak - A1700	3 NA	37 hp (28kW) / 2800 rpm	30 hp (22 kW) / 2800 rpm	12 V
C/Pak - A2300	4 NA	50 hp (37kW) / 2800 rpm	40 hp (30 kW) / 2800 rpm	12 V
C/Pak - A2300T	4 T	60 hp (45kW) / 2800 rpm	48 hp (36 kW) / 2800 rpm	12 V
C/Pak - B3.3-65	4 NA	65 hp (48 kW) / 2600 rpm	50 hp (37 kW) / 2200 rpm	12 V
C/Pak - B3.3T-85	4 T	85 hp (63 kW) / 2600 rpm	70 hp (52 kW) / 2200 rpm	12 V
C/Pak - 4B3.9	4 NA	76 hp (57 kW) / 2500 rpm	60 hp (45 kW) / 2200 rpm	12 V
C/Pak - 4BT3.9	4 T	100 hp (75 kW) / 2500 rpm	80 hp (60 kW) / 2200 rpm	12 V
C/Pak - 4BTA3.9	4 TA	125 hp (93 kW) / 2200 rpm	99 hp (74 kW) / 1900 rpm	12 V
C/Pak - 6BT5.9	6 T	150 hp (112 kW) / 2500 rpm	122 hp (91 kW) / 2200 rpm	24 V
C/Pak - 6BTA5.9	6 TA	177 hp (132 kW) / 2500 rpm	141 hp (105 kW) / 2200 rpm	24 V
C/Pak - QSB4.5 -T3	4 TC	160 hp (119 kW) / 2200 rpm	130 hp (97 kW) / 2200 rpm	12 V
C/Pak - QSB6.7 -T3	6 TC	260 hp (194 kW) / 2500 rpm	203 hp (151 kW) / 2000 rpm	12 V
C/Pak - 6CTA8.3	6 TA	260 hp (194 kW) / 2200 rpm	210 hp (157 kW) / 2100 rpm	24 V
C/Pak - QSC8.3 -T3	6 TC	305 hp (227 kW) / 2200 rpm	245 hp (183 kW) / 1800 rpm	12 V
C/Pak - M11-300	6 TA	300 hp (224 kW) / 2100 rpm	253 hp (189 kW) / 1800 rpm	24 V
C/Pak - M11-350	6 TA	350 hp (261 kW) / 2100 rpm	281 hp (210 kW) / 1800 rpm	24 V
C/Pak - QSM11	6 TC	400 hp (298 kW) / 2100 rpm	360 hp (269 kW) / 1800 rpm	24 V
C/Pak - QSX15	6 TC	540 hp (403 kW) / 2100 rpm	510 hp (380 kW) / 1800 rpm	24 V

For QSB3.3 and QSL9 in Custom Pak scope, please ring for price and availability.

For larger models like QSK19 & 23, QST30, QSK38 / 45 / 60 / 78 in Custom Pak scope, please ring for details.

Standard Cummins Custom Pak Scope

- Base frame** Channel steel section base frame with engine mounted.
- Radiator** Heavy duty radiator assy with fan shroud, fan and belt drive guard.
- Fan** Sucker fan is standard. (Pusher fan is an option.)
- Air Cleaner** Fleetguard 2 stage aircleaner assy with safety element and air restriction indicator.
- Muffler** Industrial grade muffler with outlet cap standard. (Residential muffler is an option.)
- Electrical** 12V or 24V starting and charging system – depends on model. Std voltage listed above.
- Control Panel** Murphy control panel supplied, except A series that has Cummins control panel, wiring loom fitted, engine speed control system fitted. See panel options following.
- Oil & Coolant** Initial fill of Cummins engine oil and Cummins radiator coolant included.
- Manuals** Parts manual and Operators manual supplied, Safety decals warnings fitted.



Custom Pak Assembly Detail & Dimensional Drawings Available



Cummins Diesels with Mechanical Controls

Cummins vast experience with mechanical fuel injection systems results in engines that work reliably and efficiently, even in remote locations. These engines meet the demand for fuel efficiency, clean and dependable power without the use of electronic controls.



A Series (20-60 hp)

The high displacement and power output of the A-Series engines offers big power in a small cost-efficient package. Engines feature a single-side service, PTO attachment points, and a low-noise signature. These features, coupled with Cummins legendary standards for reliability and durability, result in superior performance every day, every month and every year.



B3.3 (40-85 hp)

The Cummins B3.3 is the most reliable engine in its class, without question. The naturally aspirated B3.3 reaches up to 48kW (65hp), while the wastegate turbocharged version boosts the output to 63kW (85hp). Proven mechanical fuel injection delivers low fuel consumption as well as low emissions. Customers expect rugged durability and reliability from a Cummins engine – and the B3.3 delivers, every time.



B Series (50-180 hp)

The 4 and 6 cylinder B-Series are Cummins most popular engines and has made a lot of customers very satisfied over the years. The B-Series delivers optimised performance across the power band with a choice of naturally aspirated, turbocharged, or turbocharged/aftercooled configurations available. The unitised block design of this power plant, with mechanical fuel injection means that there are 40% fewer parts than traditional diesels. And fewer parts mean great reliability.



C8.3 (180-260 hp)

The C-Series is packed with features that help it outperform any other engine in its size and weight range. In fact, the compact C-Series is defining a new class of engine with its heavy duty features and performance. We've competitively priced the C-Series with other comparable engines, but we've also given the engines a long list of heavy-duty design features. You can expect this engine to be on the job for the long haul.

M11 (240-350 hp)

Our unique Step Timing Control (STC) injectors, higher injection pressures and a swirl-port head, optimize the M11's fuel / air mixture - the result: combustion is faster and more complete, giving you more energy with every power stroke. Every part within the M11 has been carefully designed to maximise this power... and make it last. Over 30% of the cost of running an engine is spent on fuel, so you can really save money on a compact, fuel efficient Cummins M11. The M11 works hard for your money.

Quantum System Electronic Engines – (HPCR - High Pressure Common Rail)

Cummins Quantum System engines use proprietary electronic controls to manage everything from fuel delivery and power curve shaping, protection features and data management. All are designed to work with a common set of application and diagnostic software to simplify engineering installation as well as servicing. These Quantum System engines deliver exceptional durability in the world's most demanding work sites.



QSB4.5 & QSB6.7 (130-260 hp)

The QSB series engines combines full-authority electronic controls with the reliable performance you've come to expect from Cummins. The electronics in the QSB series have been proven in our high-horsepower products – working in the harshest environments – like dusty, non-stop mining operations. The combination of improved airflow and evenly dispersed fuel results in increased power, improved transient response and reduced fuel consumption. No matter how tough the work environment is, the QSB engines are tougher.



QSC8.3 (240-330 hp)

The QSC8.3 is equal to your task. It has advanced electronics, higher torque, better throttle response, increased fuel economy, decreased noise, diagnostic and prognostics, engine protection and more. Bearings have more surface area to handle higher loads with greater durability and reduced friction in the power cylinders means longer life and increased power output. From the structurally reinforced block to the stiffened gear housing, the QSC8.3 is built stronger to last longer. The QSC has every base covered.



QSM11 (270-400 hp)

One of the highest productivity engines on any job site today, the high-capacity QSM11 electronic control system provides superior fuel economy with strong engine performance, engine protection and other programmable features. Articulated steel pistons deliver 30% longer life, while a combination full-flow and bypass oil filter reduces maintenance. The QSM high-pressure injection system and electronic controls ensure clean, powerful and efficient operation.



Qsx15 (375-560 hp)

The Cummins Qsx combines an advanced dual overhead cam design with proven Cummins heavy-duty components. The result is dependable performance without compromise, every hour of every working day. The dual overhead cam design allows optimum combustion efficiency and the advanced design meets U.S. Tier 2 & 3 emissions standards. The high pressure injection system and electronic controls of the Qsx15 ensure clean, powerful and efficient operation.



Cummins Custom Pak

Std Control Panels Engines are supplied with one of the following panel options as standard scope.

A series Cummins basic control start panel with shutdown on low engine oil pressure and high engine water temperature with hour meter and key start switch fitted. Murphy shutdown panel if required on the A series is an optional extra. Ring for details.

B series Std panel : Enclosed control instrument panel with MURPHY switch gauges and shutdowns on oil pressure and engine water temperature, with gauges for voltmeter, tacho/hourmeter, including key switch, panel mounting bracket with rubber mounts.

C series
M series Irrigation panel : As above with the addition of a Murphy 0-150 PSI pump pressure switch gauge with on/off toggle switch and irrigation time clock shutdown system.



Q series Std panel : Enclosed control instrument panel with MURPHY "PowerView" electronic display system showing engine rpm, run hours, oil pressure, engine temp, fuel rate, fuel economy, fuel consumption, engine load, voltage, service schedule information and other parameters, key switch, run selection switch, speed toggle switch, 9-pin J1939 diagnostic port, panel mounting bracket with rubber mounts.

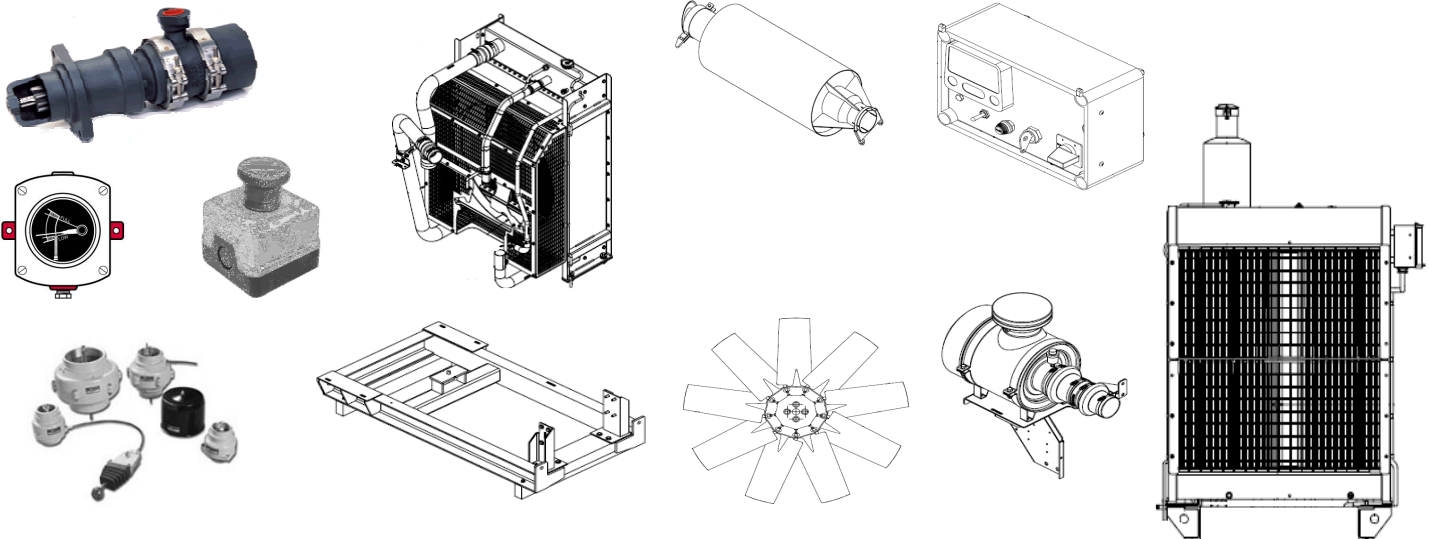
Irrigation panel : As above with addition of Murphy 0-150 PSI pump pressure switch gauge with on/off toggle switch and irrigation time clock shutdown system.

Control Panels Options Custom made panels to suit your requirements. Advise us what you require. Radiator fluid level alarm, engine sump oil level alarm, emergency stop, amber run light, alarms, auto-start panels, engine speed control panels, remote start/stop and remote control panels, fire pump control panels, additional gauges fitted to the above std panels, longer wiring looms.

Cummins Engine Options Pusher fan / Bellhousing and flywheel / Auxiliary Front engine pulley / 12v or 24v Airstarter system / Auxiliary hydraulic power take offs / Pre-cleaner and aircleaner options / Residential muffler exhaust systems / Extended mounting bases / Air compressor fitted, etc.

Auxiliary Options Radiator fluid level indicator / Oil sump fluid level indicator / Automatic oil regulator supply system / Quick connection oil drain system / Oil sampling point / Engine heaters for water jacket and engine oil sump / Emergency air shutoff / Flexible mounts for under Cummins Custom Pak engine power unit, Auxiliary hydraulic pumps.

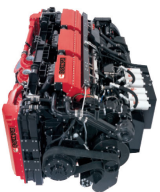
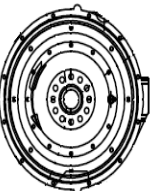


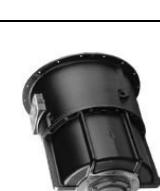
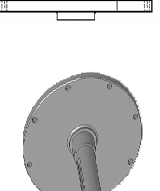
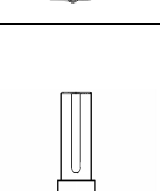


PTO Power Take Off PTO clutch shafts for inline and side load drives, PTO stubshafts for inline drives, Inline flexible drive couplings and Highly flexible (torsional vibration absorbing) drive couplings, Layshaft and Bearing assy for high side load drives, Hydraulic reduction gearboxes, Hydraulic PTO clutches, Mechanical reduction gearboxes, Universal cardin drive shafts, Hydraulic pump mounting adaptor kit drives, Hydraulic pump splitter gearboxes drives.





Engine Accessories

Centrifugal Pump Applications

Engine Model	Bellhousing x Flywheel	PTO Clutch Shaft Assembly Options		Stubshaft Options		Coupling Options		Layshaft & Bearings
		Inline Application	V-belt Application	H/Duty Application	For Inline Applications	Fenner tyre flex	Omega tyre flex	
A1700	SAE 5 x 7	C-107-SP5			SAE 7 x 1.5/8"	F70	E30M	1.1/2"
A2300	SAE 5 x 7	C-107-SP5			SAE 7 x 1.5/8"	F80	E30M	1.1/2"
A2300T	SAE 5 x 7	C-107-SP5			SAE 7 x 1.5/8"	F80	E30M	2"
B3.3-65	SAE 4 x 10	C-110-HP4	C-110-HP4	C-110-HP4	SAE 10 x 1.5/8" or 2"	F80	E40M	2"
B3.3T-85	SAE 4 x 10	C-110-HP4	C-110-HP4	C-110-HP4	SAE 10 x 1.5/8" or 2"	F90	E40M	2"
4B3.9	SAE 3 x 10 / 11	SP-111-HP3	SP-111-HP3	SP-211-HP3	SAE 10 x 2" or SAE 11 x 2"	F90	E40M	2"
4BT3.9	SAE 3 x 10 / 11	SP-111-HP3	SP-211-HP3	SP-211-HP3	SAE 10 x 2" or SAE 11 x 2"	F100	E50M	2"
4BTA3.9	SAE 3 x 10 / 11	SP-111-HP3	SP-211-HP3	SP-211-HP3	SAE 10 x 2" or SAE 11 x 2"	F110	E60M	2.1/4"
6BT5.9	SAE 3 x 10 / 11	SP-211-HP3	SP-211-HP3	SP-311-P3	SAE 10 x 2" or SAE 11 x 2"	F110 <2300	E60M	2.1/2"
6BTA5.9	SAE 3 x 10 / 11	SP-211-HP3	SP-211-HP3	SP-311-P3	SAE 10 x 2" or SAE 11 x 2"	F110 <2300	E70M	2.1/2"
QSB4.5	SAE 3 x 10 / 11	SP-211-HP3	SP-211-HP3	SP-311-P3	SAE 10 x 2" or SAE 11 x 2"	F110 <2300	E70M	2.1/2"
QSB6.7	SAE 3 x 10 / 11	SP-211-HP3	SP-311-P3	SP-311-P3	SAE 11 x 3" or 3.1/2"	F120 <2000	E70M	2.1/2"
6CTA8.3	SAE 2 x 11 SAE 1 x 14	SP-211-HP2 SP-214-P1	SP-311-P3 SP-214-P1	SP-314-P1	SAE 11 x 3" or 3.1/2" SAE 14 x 3.1/2"	F140 <1800	E70M	3"
QSC8.3	SAE 2 x 11 SAE 1 x 14	SP-311-P2 SP-214-P1	SP-311-P2 SP-314-P1	SP-314-SB-1	SAE 11 x 3" or 3.1/2" SAE 14 x 3.1/2"	F140 <1800	E70M	3"
M11-300	SAE 1 x 14	SP-214-P1	SP-314-P1	SP-314-SB-1	SAE 14 x 3.1/2"	F140 <1800	E70M	3"
M11-350	SAE 1 x 14	SP-214-P1	SP-314-P1	SP-314-SB-1	SAE 14 x 3.1/2"	F140 <1800	E80M <2000	3"
QSM11	SAE 1 x 14	SP-214-P1	SP-314-P1	SP-314-SB-1	SAE 14 x 3.1/2" or 4"	F140 <1800	E80M <2000	3.1/2"
QSX15	SAE 1 x 14	SP-314-P1	SP-314-SB-1	SP-314-SB-1	SAE 14 x 3.1/2" or 4"	F160 <1600	E80M <2000	3.1/2"
QSK19	SAE 1 x 14 SAE 0 x 18 SAE 0 x 18	IBF-314-IL-1 SP-318-P0 IBF-318-IL-0	SP-318-SB-0 IBF-318-OP-0	SP-318-SB-0 IBF-318-OP-0	SAE 14 x 4" or 4.1/2" SAE 18 x 4.1/2"		E100M <1900 E100M <1900 E120M <1800	3.1/2" 4" 4.1/2"
QSK23	SAE 0 x 18	SP-318-P0 IBF-318-IL-0	SP-318-SB-0 IBF-318-OP-0	SP-318-SB-0	SAE 18 x 4.1/2" or 5"		E100M <1900 E120M <1800	4.1/2" 5"
QSK30	SAE 0 x 18	SP-318-P0 IBF-318-IL-0	SP-318-SB-0 IBF-318-OP-0	SP-318-SB-0	SAE 18 x 4.1/2" or 5"		E100M <1900 E120M <1800	4.1/2" 5"
								

EVERY SECOND.



Fire Pump Scope

A LEADER IN FIRE PROTECTION POWER.



Fire Pump Diesel Engine – mechanical control

Standard configuration:

Cummins mechanical control diesel engine, heat exchanger cooling system fitted, 24V electrics, fuel stop solenoid energized to stop, front and rear engine mounts, air cleaner assy, accessory drive belt guard, exhaust outlet connection, engine painted safety red colour, SAE flywheel and bellhousing to suit PTO overcentre clutch or inline drive stubshaft or SAE flywheel coupling, engine oil and coolant initial fill included, 1 copy operators and maintenance manual.

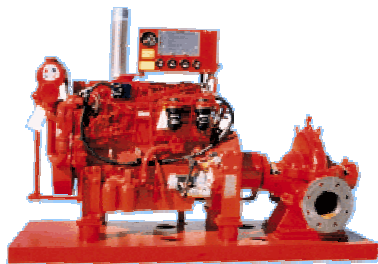
Conforms to AS2941 and NZ S4541 standards.

Specifications:

Item Number	Model	Intermittent Power	Voltage
F/Pak - 4BT	4BT3.9	100 hp (75 kW) at 2500 rpm	24V
F/Pak - 4BTA	4BTA3.9	130 hp (97 kW) at 2500 rpm	24V
F/Pak - 6BT	6BT5.9	150 hp (112 kW) at 2500 rpm	24V
F/Pak - 6BTA	6BTA5.9	180 hp (134 kW) at 2500 rpm	24V
F/Pak - 6CTA	6CTA8.3	260 hp (193 kW) at 2200 rpm	24V
F/Pak - M11-300	M11-300	300 hp (224 kW) at 2100 rpm	24V
F/Pak - M11-350	M11-350	350 hp (261 kW) at 2100 rpm	24V

Smaller and larger mechanical engine powered units available on request.

QS – Quantum System Electronic control engines for fire pump drive also to AS2941 are available upon request. Please contact Diesel Parts and Service for details.



Optional Control Panel





Cummins Recon Products

Cummins Recon Engines and Long Blocks

Every Cummins ReCon engine is completely remanufactured to the latest Cummins specifications to deliver exceptional performance and rock solid reliability. Plus, with a Cummins ReCon, engine repair time is cut dramatically to get you up and running faster. Every ReCon engine is covered by a comprehensive nationwide warranty.

Cummins ReCon engines give you a fast turn-around so you are back to work in no time, quality you can trust, remanufactured to the latest Cummins specifications using 100% genuine Cummins new or ReCon parts giving reliability and durability.

Cummins Long Block includes cylinder block, crankshaft, main bearings, pistons, con rods, con rod bearings, cylinder head, camshaft, tappets, push tubes, rocker lever assys, rear crank cover and seal, gear housing cover and seals, drive gears (no fuel pump drive gear), oil cooler, oil pump and valve cover.

Available for Models:

4B-3.9

4BT-3.9

4BTA-3.9

6B-5.9

6BT-5.9

6BTA-5.9

6C-8.3

6CT-8.3

6CTA-8.3

M11

N14

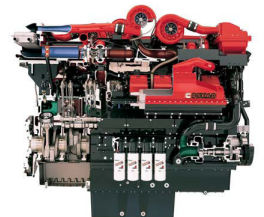


Cummins Recon Parts

Cummins Recon Parts are a proven economical alternative to new genuine Cummins parts.

A full range of Cummins ReCON parts and components are available including:

- cylinder heads
- turbo chargers
- injectors
- long blocks
- short blocks
- electrics (including starter motors, alternators etc)

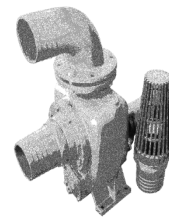


ReCon Parts





Cummins Engine Powered Pumps



Self Priming Pump Sets FSR series 6" to 8"

Std Scope: FSR series, self priming centrifugal pump, inline drive to Cummins Custom Pak diesel engine, battery box with battery and leads fitted, channel steel skid type base frame, with or without fuel tank, centre lift point, flex coupling and guard.

Std Pump: CI/CI/SS/PG – Cast iron body and impeller, 420 SS shaft, packed gland. Impeller wear ring fitted.

Options: Self lubrication type 21 mechanical seal, Carbon vs Ceramic or SiC vs SiC faces.

Applications: Water Tank Filling Station / Water Truck / Irrigation / De-watering

Size / Power	Pump / Engine	Speed	Maximum Volume	Maximum Head	Nominal Duty
6" / 24 hp	FSR150 / A1700	2000 rpm	90 l/sec	28 mtrs	77 l/sec at 12 mtrs
6" / 34 hp	FSR150 / A2300	2200 rpm	100 l/sec	32 mtrs	77 l/sec at 18 mtrs
8" / 30 hp	FSR200 / A2300	1800 rpm	105 l/sec	20 mtrs	82 l/sec at 13 mtrs
8" / 40 hp	FSR200 / A2300T	2100 rpm	120 l/sec	27 mtrs	100 l/sec at 17 mtrs
8" / 50 hp	FSR200 / B3.3-65	2200 rpm	130 l/sec	33 mtrs	110 l/sec at 18 mtrs

WE MANUFACTURE TO YOUR REQUIREMENTS



Pump Set Options and Accessories:

			
Emergency stop	Work Lamps	Rotating Beacons	Speed Controls
			
Hose and Fittings	Quick Couplings	Battery Isolation	Fire Extinguisher



DIESEL PARTS & SERVICE



Cummins Engine Powered Pumps



Self Priming Trash Pump Sets TS series 3" to 10"

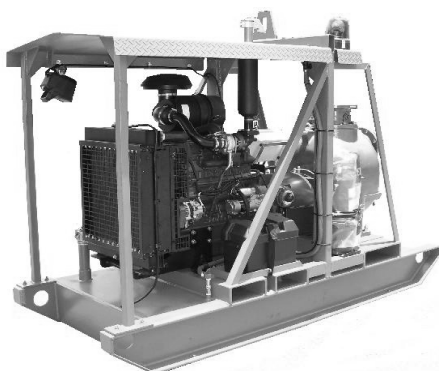
Std scope: TS series, self priming heavy duty **Trash Pump**, inline drive to Cummins Custom Pak diesel engine, battery box with battery and leads fitted, channel steel skid type base frame, with or without fuel tank, centre lift point, coupling and guard. Pump has oil lubricated mechanical seal assy fitted as standard.

Std Pump: CI/DI/HTS/OLMS – Cast iron body, ductile iron impeller, 4140 alloy steel shaft, oil lubricated mechanical seal with SiC vs SiC or TC vs TC faces.

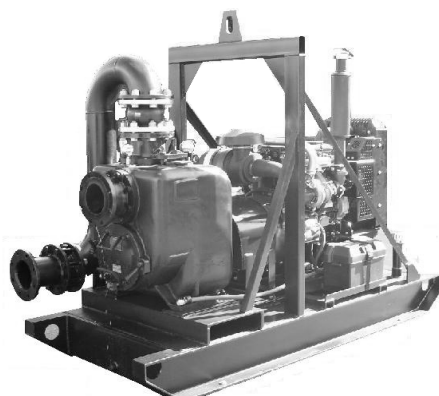
Options: Ductile iron or 316SS or CD4MCu hardened SS body, 316SS or CD4MCu hardened SS impeller and wear plates, 420SS or 431SS or EN26 high tensile steel shaft.

Applications: **Contractors Pump / Trash and Sewage Pumping / Mine De-watering Pump
Quarry De-watering / Water Tank Filling Station / Water Truck / Irrigation**

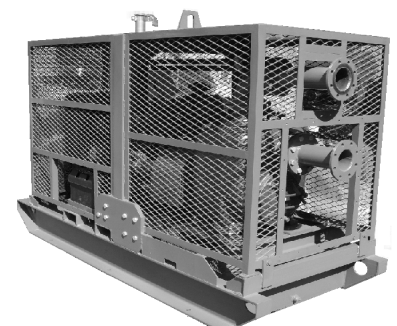
Size / Power	Pump / Engine	Speed	Maximum Volume	Maximum Head	Nominal Duty
3" / 25 hp	TS-80 / A1700	2150 rpm	28 l/sec	35 mtrs	25 l/sec at 28 mtrs
3" / 32 hp	TS-80H / A2300	2000 rpm	24 l/sec	55 mtrs	21 l/sec at 45 mtrs
3" / 43 hp	TS-80H / A2300T	2150 rpm	24 l/sec	60 mtrs	21 l/sec at 52 mtrs
4" / 32 hp	TS-100 / A2300	1950 rpm	46 l/sec	35 mtrs	38 l/sec at 28 mtrs
4" / 30 hp	TS-100H / A2300	1800 rpm	44 l/sec	42 mtrs	38 l/sec at 36 mtrs
4" / 40 hp	TS-100H / A2300T	2000 rpm	44 l/sec	52 mtrs	38 l/sec at 46 mtrs
4" / 50 hp	TS-100H / B3.3-65	2150 rpm	44 l/sec	60 mtrs	38 l/sec at 55 mtrs
6" / 35 hp	TS-150 / A2300T	1750 rpm	85 l/sec	30 mtrs	70 l/sec at 20 mtrs
6" / 45 hp	TS-150 / B3.3-65	1750 rpm	90 l/sec	33 mtrs	70 l/sec at 23 mtrs
6" / 50 hp	TS-150 / B3.3T-85	1550 rpm	95 l/sec	34 mtrs	70 l/sec at 24 mtrs
6" / 60 hp	TS-150H / B3.3T-85	1800 rpm	90 l/sec	50 mtrs	77 l/sec at 38 mtrs
6" / 75 hp	TS-150H / 4BT3.9	1950 rpm	90 l/sec	58 mtrs	77 l/sec at 48 mtrs
8" / 55 hp	TS-200 / B3.3T-85	1600 rpm	160 l/sec	30 mtrs	120 l/sec at 16 mtrs
8" / 70 hp	TS-200 / 4BT3.9	1750 rpm	170 l/sec	35 mtrs	120 l/sec at 23 mtrs
10" / 95 hp	TS-250 / 4BTA3.9	1750 rpm	215 l/sec	35 mtrs	180 l/sec at 25 mtrs
10" / 105 hp	TS-250 / 6BT5.9	1750 rpm	215 l/sec	40 mtrs	180 l/sec at 30 mtrs
10" / 120 hp	TS-250 / 6BTA5.9	1750 rpm	215 l/sec	45 mtrs	180 l/sec at 34 mtrs



6" TS150 / 50 hp with roof



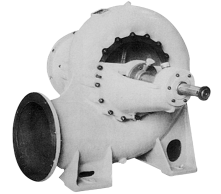
6" TS150H / 75 hp



4" TS100 / 30 hp with cage



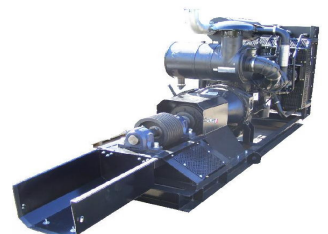
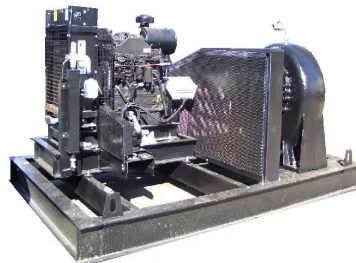
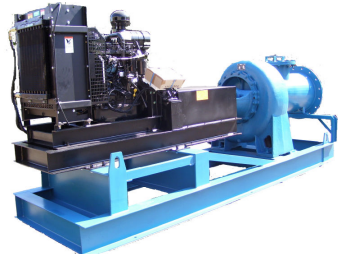
Cummins Engine Powered Pumps



DPS End Suction Pump Sets HB & HW series 8" to 32"

- Std scope:** DPS mixed flow centrifugal end suction pump, inline drive to Cummins Custom Pak diesel engine, battery and leads fitted, channel steel base frame, with or without fuel tank.
 8" to 10" pump – Direct coupled inline drive with flex coupling.
 12" to 32" pump – GB – Reduction clutchable gearbox with coupling.
- Std Pump:** CI/CI/HTS/PG – Cast iron body and impeller, 1045 steel shaft and shaft sleeve, packed gland.
- Options:** Ductile iron body, ductile iron or stainless steel impeller, 4140HTS or 420SS or 431SS high tensile shaft and shaft sleeve, 420SS,431SS or 316SS shaft sleeve.
 Self lubricating spring type mechanical seal, Carbon vs Ceramic or SiC vs SiC faces.
 Cartridge seal assy or split cartridge seal assy or dual cartridge assy with oil lubricated seal.
- Applications:** High Volume - Low Head Pumping / Irrigation / Water Transfer / De-watering

Size / Power	Pump / Engine	Speed	Maximum Volume	Maximum Head	Nominal Duty
8" / 34 hp	8HBG35 / A2300T	1700 rpm	190 l/sec	18 mtrs	150 l/sec at 14 mtrs
8" / 47 hp	8HBG35 / B3.3-65	1900 rpm	210 l/sec	22 mtrs	150 l/sec at 18 mtrs
10" / 58 hp	10HBG40 / B3.3T-85	1700 rpm	260 l/sec	20 mtrs	220 l/sec at 15 mtrs
10" / 75 hp	10HBG40 / 4BT3.9	1900 rpm	280 l/sec	25 mtrs	220 l/sec at 21 mtrs
12" / 52 hp	12HBG40 / GB1.5 / 4B3.9	1400/1800 rpm	360 l/sec	15 mtrs	300 l/sec at 9 mtrs
12" / 78 hp	12HBG40 / GB1.5 / 4BT3.9	1400/2100 rpm	420 l/sec	20 mtrs	300 l/sec at 16 mtrs
16" / 56 hp	400HW7 / GB2.5 / 4B3.9	800/2000 rpm	500 l/sec	10 mtrs	420 l/sec at 7 mtrs
16" / 80 hp	400HW7 / GB2.5 / 4BT3.9	900/2200 rpm	580 l/sec	13 mtrs	420 l/sec at 11 mtrs
16" / 99 hp	400HW7 / GB2.0 / 4BTA3.9	980/1900 rpm	620 l/sec	15 mtrs	420 l/sec at 13 mtrs
16" / 128 hp	400HW10 / GB2.0 / 6BTA5.9	900/1800 rpm	620 l/sec	18 mtrs	500 l/sec at 15 mtrs
16" / 210 hp	400HW10 / GB2.0 / 6CTA8.3	1100/2200 rpm	750 l/sec	25 mtrs	600 l/sec at 21 mtrs
20" / 72 hp	500HW6 / GB3.0 / 4BT3.9	615/1820 rpm	600 l/sec	12 mtrs	500 l/sec at 9 mtrs
20" / 108 hp	500HW6 / GB2.5 / 6BT5.9	690/1700 rpm	700 l/sec	15 mtrs	590 l/sec at 11 mtrs
20" / 128 hp	500HW6 / GB2.5 / 6BTA5.9	730/1800 rpm	830 l/sec	17 mtrs	625 l/sec at 12 mtrs
26" / 210 hp	26HBC40 / GB3.5 / 6CTA8.3	565/2000 rpm	1550 l/sec	14 mtrs	1400 l/sec at 7 mtrs
26" / 245 hp	26HBC40 / GB3.0 / QSC8.3	600/1800 rpm	1650 l/sec	16 mtrs	1400 l/sec at 10 mtrs
26" / 281 hp	26HBC40 / GB3.0 / M11-350	650/1950 rpm	1750 l/sec	18 mtrs	1400 l/sec at 13 mtrs
26" / 298 hp	26HBC40 / GB2.5 / QSL9	650/1650 rpm	1750 l/sec	18 mtrs	1400 l/sec at 13 mtrs
26" / 354 hp	26HBC30 / GB2.5 / QSM11	650/1650 rpm	1750 l/sec	20 mtrs	1400 l/sec at 15 mtrs
26" / 510 hp	26HBC30 / GB2.5 / QSX15	710/1800 rpm	1900 l/sec	23 mtrs	1500 l/sec at 18 mtrs
32" / 515 hp	800HW16 / GB3.0 / QSX15	530/1600 rpm	2200 l/sec	17 mtrs	2000 l/sec at 12 mtrs
32" / 600 hp	800HW16 / GB3.0 / QSK19	600/1800 rpm	2500 l/sec	22 mtrs	2000 l/sec at 18 mtrs





Cummins Engine Powered Pumps



ISO End Suction Pump Sets 2.5"x1.5" to 10"x8"

Std scope: ISO end suction centrifugal pump, inline drive to Cummins Custom Pak diesel engine, battery and leads fitted, channel steel skid base frame, with or without fuel tank, coupling and guard.

Std Pump: CI/BR/SS/MS – Cast iron body, bronze impeller, 420SS shaft with self lubricating type 21 mechanical seal Carbon vs Ceramic.

Options: Stainless steel body and impeller, 316SS or 431SS shaft, SiC vs SiC mech seal.

Applications: Irrigation / Mine & Quarry De-watering / Water Truck / Dust Control Systems

Up to 2800 rpm speed pumpsets

Size / Power	Pump / Engine	Speed	Maximum Volume	Maximum Head	Nominal Duty
2.5"x1.5" / 30 hp	65x40-250 / A1700	2800 rpm	15 l/sec	95 mtrs	12 l/sec at 90 mtrs
2.5"x1.5" / 40 hp	65x40-315 / A2300	2800 rpm	15 l/sec	116 mtrs	12 l/sec at 108 mtrs
2.5"x1.5" / 48 hp	65x40-315 / A2300T	2800 rpm	15 l/sec	138 mtrs	12 l/sec at 130 mtrs
3"x2" / 30 hp	80x50-200 / A1700	2800 rpm	30 l/sec	30 mtrs	25 l/sec at 55 mtrs
3"x2" / 40 hp	80x50-250 / A2300	2800 rpm	30 l/sec	82 mtrs	25 l/sec at 70 mtrs
3"x2" / 48 hp	80x50-250 / A2300T	2800 rpm	30 l/sec	100 mtrs	25 l/sec at 90 mtrs
4"x2.5" / 40 hp	100x65-200 / A2300	2800 rpm	50 l/sec	58 mtrs	35 l/sec at 52 mtrs
4"x2.5" / 48 hp	100x65-200 / A2300T	2800 rpm	50 l/sec	65 mtrs	35 l/sec at 62 mtrs
4"x2.5" / 48 hp	100x65-250 / A2300T	2800 rpm	50 l/sec	77 mtrs	35 l/sec at 68 mtrs

Up to 2200 rpm speed pumpsets

Size / Power	Pump / Engine	Speed	Maximum Volume	Maximum Head	Nominal Duty
2.5"x1.5" / 25 hp	65x40-315 / A1700	2200 rpm	12 l/sec	90 mtrs	10 l/sec at 82 mtrs
3"x2" / 25 hp	80x50-250 / A1700	2200 rpm	30 l/sec	60 mtrs	20 l/sec at 54 mtrs
3"x2" / 34 hp	80x50-315 / A2300	2200 rpm	25 l/sec	90 mtrs	20 l/sec at 78 mtrs
4"x2.5" / 25 hp	100x65-200 / A1700	2200 rpm	45 l/sec	40 mtrs	35 l/sec at 32 mtrs
4"x2.5" / 34 hp	100x65-250 / A2300	2200 rpm	45 l/sec	65 mtrs	35 l/sec at 58 mtrs
4"x2.5" / 70 hp	100x65-315 / B3.3T	2200 rpm	45 l/sec	84 mtrs	35 l/sec at 80 mtrs
5"x3" / 133 hp	125x80-400 / 6BTA5.9	2200 rpm	60 l/sec	150 mtrs	50 l/sec at 125 mtrs
5"x4" / 34 hp	125x100-200 / A2300	2200 rpm	90 l/sec	38 mtrs	70 l/sec at 30 mtrs
5"x4" / 70 hp	125x100-250 / B3.3T	2200 rpm	90 l/sec	60 mtrs	70 l/sec at 50 mtrs
5"x4" / 120 hp	125x100-315 / 6BT5.9	2200 rpm	90 l/sec	92 mtrs	70 l/sec at 82 mtrs
5"x4" / 210 hp	125x100-400 / 6CTA8.3	2200 rpm	90 l/sec	150 mtrs	70 l/sec at 138 mtrs
6"x5" / 120 hp	150x125-250 / 6BT5.9	2200 rpm	160 l/sec	56 mtrs	110 l/sec at 50 mtrs
6"x5" / 133 hp	150x125-315 / 6BTA5.9	2200 rpm	160 l/sec	90 mtrs	110 l/sec at 70 mtrs
6"x5" / 210 hp	150x125-400 / 6CTA8.3	2200 rpm	140 l/sec	110 mtrs	110 l/sec at 100 mtrs





Cummins Engine Powered Pumps



ISO End Suction Pump Sets 2.5"x1.5" to 10"x8"

Std scope: ISO end suction centrifugal pump, inline drive to Cummins Custom Pak diesel engine, battery and leads fitted, channel steel skid base frame, with or without fuel tank, coupling and guard.

Std Pump: CI/BR/SS/MS – Cast iron body, bronze impeller, 420SS shaft with self lubricating type 21 mechanical seal Carbon vs Ceramic.

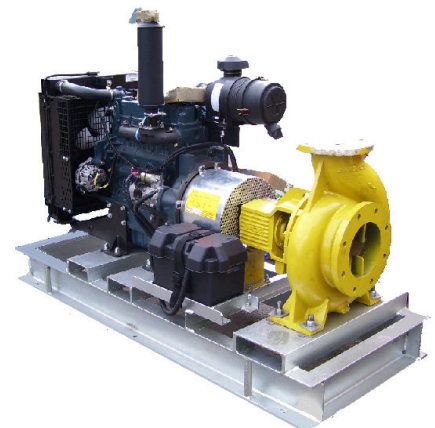
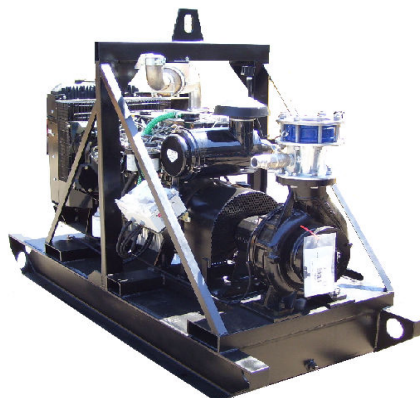
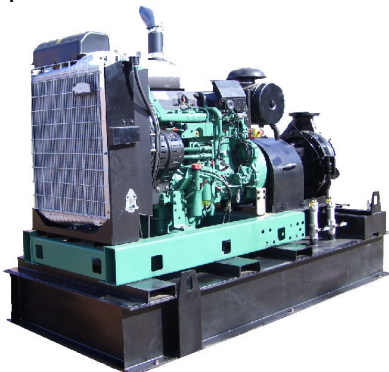
Options: Stainless steel body and impeller, 316SS or 431SS shaft, SiC vs SiC mech seal.

Applications: Irrigation / Mine & Quarry De-watering / Water Truck / Dust Control Systems

Up to 1800 rpm speed pumpsets

Size / Power	Pump / Engine	Speed	Maximum Volume	Maximum Head	Nominal Duty
3"x2" / 22 hp	80x50-315 / A1700	1800 rpm	20 l/sec	60 mtrs	15 l/sec at 54 mtrs
4"x2.5" / 22 hp	100x65-250 / A1700	1800 rpm	40 l/sec	40 mtrs	30 l/sec at 32 mtrs
4"x2.5" / 36 hp	100x65-315 / A2300T	1800 rpm	40 l/sec	60 mtrs	30 l/sec at 53 mtrs
5"x3" / 96 hp	125x80-400 / 4BTA3.9	1800 rpm	50 l/sec	100 mtrs	40 l/sec at 86 mtrs
5"x4" / 22 hp	125x100-200 / A1700	1800 rpm	70 l/sec	26 mtrs	60 l/sec at 20 mtrs
5"x4" / 36 hp	125x100-250 / A2300T	1800 rpm	70 l/sec	40 mtrs	60 l/sec at 32 mtrs
5"x4" / 60 hp	125x100-315 / B3.3T	1800 rpm	70 l/sec	62 mtrs	60 l/sec at 54 mtrs
5"x4" / 120 hp	125x100-400 / 6BTA5.9	1800 rpm	80 l/sec	104 mtrs	60 l/sec at 92 mtrs
5"x4" / 205 hp	125x100-500 / 6CTA8.3	1800 rpm	80 l/sec	160 mtrs	60 l/sec at 136 mtrs
6"x5" / 61 hp	150x125-250 / B3.3T	1800 rpm	130 l/sec	38 mtrs	100 l/sec at 30 mtrs
6"x5" / 96 hp	150x125-315 / 4BTA3.9	1800 rpm	130 l/sec	62 mtrs	100 l/sec at 52 mtrs
6"x5" / 205 hp	150x125-400 / 6CTA8.3	1800 rpm	130 l/sec	100 mtrs	100 l/sec at 92 mtrs
6"x5" / 281 hp	150x125-500 / M11-350	1800 rpm	130 l/sec	160 mtrs	100 l/sec at 136 mtrs
8"x6" / 120 hp	200x150-315 / 6BTA5.9	1800 rpm	180 l/sec	55 mtrs	150 l/sec at 46 mtrs
8"x6" / 245 hp	200x150-400 / QSC8.3	1800 rpm	200 l/sec	100 mtrs	150 l/sec at 88 mtrs
8"x6" / 360 hp	200x150-500 / QSM11	1800 rpm	220 l/sec	155 mtrs	150 l/sec at 132 mtrs
10"x8" / 205 hp	250x200-315 / 6CTA8.3	1800 rpm	320 l/sec	52 mtrs	250 l/sec at 44 mtrs
10"x8" / 360 hp	250x200-400 / QSM11	1800 rpm	320 l/sec	96 mtrs	250 l/sec at 86 mtrs

For bigger pumps with larger flow rates and higher heads, please refer to the Split Case pump sets. Split Cases series - SC series 10"x8" up to S series 48"x32" Pumps.





Cummins Engine Powered Pumps



Split Case Pump Sets SC series 10"x8" to 18"x14"

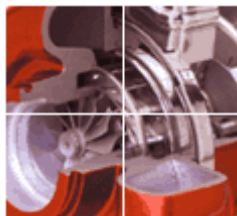
Std scope: DPS split case double suction pump, inline drive to Cummins Custom Pak diesel engine, battery and leads fitted, channel steel base frame, with or without fuel tank.
SC pump – Direct coupled inline drive with flex coupling.

Std Pump: CI/CI/HTS/PG – HP cast iron case, cast iron impeller, 4140HTS alloy shaft, packed gland.

Options: Ductile iron body, ductile iron or stainless steel impeller, 420SS or 431SS high tensile shaft and shaft sleeve, 420SS, 431SS or 316SS shaft sleeve.
Self lubricating spring type mechanical seal, Carbon vs Ceramic or SiC vs SiC faces.
Cartridge seal assy or split cartridge seal assy or dual cartridge assy with oil lubricated seal.

Applications: High Volume - High Head Pumping / Irrigation / Town Water Supply
Mine De-watering / Pipeline Booster / Power Stations

Size / Power	Pump / Engine	Speed	Maximum Volume	Maximum Head	Nominal Duty
10"x8" / 345 hp	SC250x200-520 / QSM11	1500 rpm	280 l/sec	90 mtrs	210 l/sec at 80 mtrs
10"x8" / 498 hp	SC250x200-670 / QSX15	1500 rpm	280 l/sec	150 mtrs	210 l/sec at 130 mtrs
10"x8" / 557 hp	SC250x200-670 / QSK19	1500 rpm	280 l/sec	165 mtrs	210 l/sec at 150 mtrs
12"x10" / 345 hp	SC300x250-480 / QSM11	1500 rpm	450 l/sec	80 mtrs	320 l/sec at 58 mtrs
12"x10" / 498 hp	SC300x250-600 / QSX15	1500 rpm	450 l/sec	110 mtrs	320 l/sec at 85 mtrs
12"x10" / 557 hp	SC300x250-600 / QSK19	1500 rpm	450 l/sec	130 mtrs	320 l/sec at 105 mtrs
12"x10" / 694 hp	SC300x250-600 / QSK23	1500 rpm	450 l/sec	140 mtrs	320 l/sec at 120 mtrs
16"x14" / 187hp	SC400x350-360 / 6CTA8.3	1500 rpm	620 l/sec	35 mtrs	450 l/sec at 22 mtrs
16"x14" / 253 hp	SC400x350-360 / M11-350	1500 rpm	620 l/sec	45 mtrs	450 l/sec at 34 mtrs
16"x12" / 345 hp	SC400x300-435 / QSM11	1500 rpm	620 l/sec	60 mtrs	450 l/sec at 44 mtrs
16"x12" / 498 hp	SC400x300-560 / QSX15	1500 rpm	620 l/sec	80 mtrs	450 l/sec at 60 mtrs
16"x12" / 694 hp	SC400x300-700 / QSK23	1500 rpm	620 l/sec	105 mtrs	450 l/sec at 85 mtrs
16"x12" / 785 hp	SC400x300-700 / QST30	1500 rpm	620 l/sec	120 mtrs	450 l/sec at 100 mtrs
16"x12" / 1097 hp	SC400x300-700 / QSK38	1500 rpm	620 l/sec	140 mtrs	450 l/sec at 115 mtrs
16"x12" / 1500 hp	SC400x300-700 / QSK45	1500 rpm	620 l/sec	160 mtrs	450 l/sec at 140 mtrs
16"x12" / 1875 hp	SC400x300-700 / QSK60	1500 rpm	620 l/sec	185 mtrs	450 l/sec at 165 mtrs
18"x14" / 345 hp	SC450x350-430 / QSM11	1500 rpm	1000 l/sec	40 mtrs	750 l/sec at 26 mtrs
18"x14" / 498 hp	SC450x350-430 / QSX15	1500 rpm	1000 l/sec	52 mtrs	750 l/sec at 40 mtrs
18"x14" / 557 hp	SC450x350-430 / QSK19	1500 rpm	1000 l/sec	60 mtrs	750 l/sec at 45 mtrs
16"x14" / 694 hp	SC400x350-510 / QSK23	1500 rpm	1000 l/sec	75 mtrs	750 l/sec at 55 mtrs
16"x14" / 785 hp	SC400x350-510 / QST30	1500 rpm	1000 l/sec	85 mtrs	750 l/sec at 62 mtrs
16"x14" / 1000 hp	SC400x300-510 / QSK38	1500 rpm	1000 l/sec	90 mtrs	750 l/sec at 70 mtrs





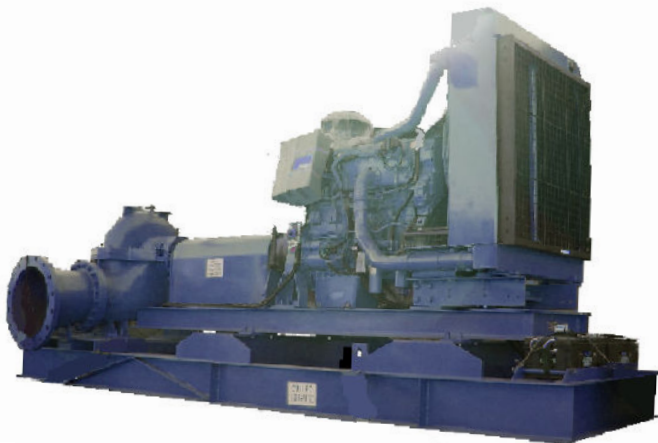
Cummins Engine Powered Pumps



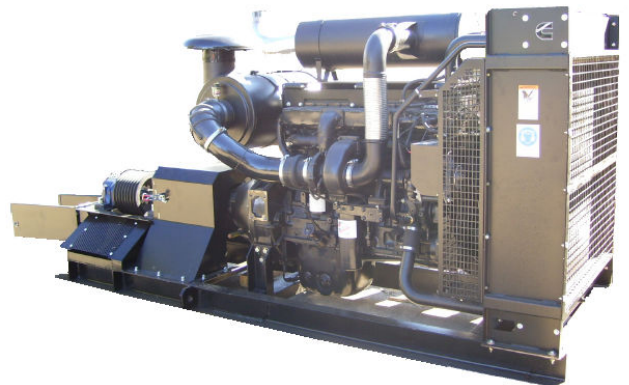
Split Case Pump Sets S series 24"x16" to 48"x32"

- Std scope:** DPS split case double suction pump, inline drive to Cummins Custom Pak diesel engine, battery and leads fitted, channel steel base frame, with or without fuel tank.
S pump – GB – Reduction clutchable gearbox with coupling.
- Std Pump:** CI/CI/HTS/PG – HP cast iron case, cast iron impeller, 4140HTS alloy shaft, packed gland.
- Options:** Ductile iron body, ductile iron or stainless steel impeller, 420SS or 431SS high tensile shaft and shaft sleeve, 420SS, 431SS or 316SS shaft sleeve.
Self lubricating spring type mechanical seal, Carbon vs Ceramic or SiC vs SiC faces.
Cartridge seal assy or split cartridge seal assy or dual cartridge assy with oil lubricated seal.
- Applications:** **High Volume - High Head Pumping / Irrigation / Town Water Supply**
Mine De-watering / Pipeline Booster / Power Stations

Size / Power	Pump / Engine	Speed Pump / Engine	Maximum Volume	Maximum Head	Nominal Duty
24"x20" / 345 hp	600S-22 / GB1.5 / QSM11	1000 / 1500 rpm	1100 l/sec	28 mtrs	880 l/sec at 22 mtrs
24"x20" / 500 hp	600S-32 / GB1.5 / QSX15	1000 / 1500 rpm	1100 l/sec	38 mtrs	880 l/sec at 32 mtrs
24"x20" / 760 hp	600S-47 / GB1.8 / QSK23	1000 / 1800 rpm	1100 l/sec	60 mtrs	880 l/sec at 47 mtrs
24"x16" / 1260 hp	600S-75 / GB1.5 / QSK38	1000 / 1800 rpm	1100 l/sec	85 mtrs	880 l/sec at 75 mtrs
28"x20" / 850 hp	700S-47 / GB2.5 / QST30	730 / 1800 rpm	1250 l/sec	57 mtrs	1000 l/sec at 45 mtrs
28"x20" / 1000 hp	700S-47 / GB2.5 / QSK38	730 / 1800 rpm	1250 l/sec	65 mtrs	1000 l/sec at 52 mtrs
28"x20" / 1875 hp	700S-47 / GB2.0 / QSK60	900 / 1800 rpm	1550 l/sec	90 mtrs	1200 l/sec at 76 mtrs
32"x24" / 760 hp	800S-32 / GB2.5 / QSK23	730 / 1800 rpm	2100 l/sec	40 mtrs	1500 l/sec at 25 mtrs
32"x24" / 850 hp	800S-32 / GB2.5 / QST30	730 / 1800 rpm	2100 l/sec	45 mtrs	1500 l/sec at 32 mtrs
32"x24" / 1260 hp	800S-80 / GB2.5 / QSK38	730 / 1800 rpm	2100 l/sec	55 mtrs	1500 l/sec at 55 mtrs
32"x24" / 1875 hp	800S-80 / GB2.5 / QSK60	730 / 1800 rpm	2100 l/sec	66 mtrs	1500 l/sec at 60 mtrs
32"x24" / 2250 hp	800S-80 / GB2.5 / QSK60	730 / 1800 rpm	2100 l/sec	90 mtrs	1500 l/sec at 80 mtrs
48"x32" / 1500 hp	1200S-56 / GB3.5 / QSK45	500 / 1800 rpm	3700 l/sec	40 mtrs	2500 l/sec at 40 mtrs
48"x32" / 1875 hp	1200S-56 / GB3.5 / QSK60	500 / 1800 rpm	3700 l/sec	55 mtrs	2500 l/sec at 40 mtrs
48"x32" / 2250 hp	1200S-56 / GB3.0 / QSK60	600 / 1800 rpm	4000 l/sec	65 mtrs	2500 l/sec at 52 mtrs
48"x32" / 2700 hp	1200S-56 / GB3.0 / QSK78	600 / 1800 rpm	4000 l/sec	75 mtrs	2500 l/sec at 64 mtrs



SDS350-430B / 550 hp



M11-350 hp Layshaft





Cummins Engine Powered Pumps



Slurry Pump Sets Z series 2"x1" to 8"x6"

Std scope: DPS Z series centrifugal, cantilevered, end suction, double casing, SLURRY pump, with HM hard metal wear resistant parts, inline drive to Cummins Custom Pak diesel engine, battery and leads fitted, channel steel base frame, with or without fuel tank.
 2"x1" to 6"x 4" pump – Direct coupled inline drive with flex coupling.
 8"x6" to 12"x10" pump – GB – Reduction clutchable gearbox with coupling.

Std Pump: CI/HM/HTS/EXP-PG – Cast iron body and frame, Hard Metal wear resistant chrome alloy impeller and liners, 1045 steel shaft, expeller with packed gland and SS shaft sleeve.

Options: SG or ductile iron body and frame, stainless steel or hardened stainless steel impeller and liners, 4140HTS or 420SS or 431SS shaft and sleeve, other gland seals or mechanical seals.

Applications: **High Abrasive and High Density Slurry Pumping / Mine & Quarry De-watering Dredging / Slurry Booster Line / Ash and Sludge Liquid Solids Mixture**

Size / Power	Pump / Engine	Speed Pump / Engine	Maximum Volume	Maximum Head	Nominal Duty
2"x1" / 34 hp	25Z-25 / A2300	2250 rpm	10 l/sec	69 mtrs	8 l/sec @ 60 mtrs
2.5"x1.5" / 38 hp	40Z-70 / B3.3-65	1500 rpm	20 l/sec	58 mtrs	12 l/sec @ 52 mtrs
2.5"x1.5" / 50 hp	40Z-70 / B3.3T-85	1500 rpm	20 l/sec	74 mtrs	12 l/sec @ 70 mtrs
2.5"x1.5" / 68 hp	40Z-70 / 4BT3.9	1650 rpm	20 l/sec	94 mtrs	12 l/sec @ 91 mtrs
3"x2" / 30 hp	50Z-21 / A2300	1850 rpm	25 l/sec	37 mtrs	20 l/sec @ 30 mtrs
3"x2" / 44 hp	50Z-21 / A2300T	2250 rpm	25 l/sec	55 mtrs	20 l/sec @ 50 mtrs
3"x2" / 60 hp	50Z-90 / 4BT3.9	1500 rpm	40 l/sec	64 mtrs	24 l/sec @ 60 mtrs
3"x2" / 80 hp	50Z-90 / 4BTA3.9	1500 rpm	40 l/sec	70 mtrs	24 l/sec @ 66 mtrs
3"x2" / 110 hp	50Z-90 / 6BTA5.9	1500 rpm	40 l/sec	80 mtrs	24 l/sec @ 78 mtrs
5"x3" / 30 hp	80Z-21 / A2300	1800 rpm	60 l/sec	35 mtrs	36 l/sec at 28 mtrs
5"x3" / 50 hp	80Z-21 / B3.3-65	2200 rpm	60 l/sec	55 mtrs	36 l/sec at 47 mtrs
5"x3" / 110 hp	80Z-90B / 6BTA5.9	1500 rpm	60 l/sec	68 mtrs	36 l/sec at 60 mtrs
5"x3" / 190 hp	80Z-90A / 6CTA8.3	1500 rpm	60 l/sec	98 mtrs	36 l/sec at 90 mtrs
6"x4" / 50 hp	100Z-38 / B3.3T-85	1500 rpm	100 l/sec	32 mtrs	70 l/sec at 23 mtrs
6"x4" / 63 hp	100Z-38 / 4BT3.9	1500 rpm	100 l/sec	45 mtrs	70 l/sec at 35 mtrs
6"x4" / 110 hp	100Z-90 / 6BTA5.9	1500 rpm	100 l/sec	60 mtrs	70 l/sec at 56 mtrs
6"x4" / 190 hp	100Z-90 / 6CTA8.3	1500 rpm	100 l/sec	75 mtrs	70 l/sec at 68 mtrs
6"x4" / 240 hp	100Z-90 / QSC8.3	1500 rpm	100 l/sec	92 mtrs	70 l/sec at 90 mtrs
8"x6" / 96 hp	150Z-25 / GB1.5 / 4BTA3.9	1200/1800 rpm	200 l/sec	32 mtrs	160 l/sec at 28 mtrs
8"x6" / 120 hp	150Z-25 / GB1.5 / 6BTA5.9	1200/1800 rpm	200 l/sec	42 mtrs	160 l/sec at 36 mtrs
8"x6" / 72 hp	150Z-50 / GB2.5 / 4BT3.9	730/1800 rpm	160 l/sec	30 mtrs	160 l/sec at 18 mtrs
8"x6" / 110 hp	150Z-50 / GB2.0 / 6BT5.9	900/1800 rpm	200 l/sec	44 mtrs	160 l/sec at 35 mtrs
8"x6" / 200 hp	150Z-50 / GB1.5 / 6CTA8.3	1100/1650 rpm	200 l/sec	70 mtrs	160 l/sec at 57 mtrs
8"x6" / 210 hp	150Z-95 / GB2.5 / 6CTA8.3	730/1800 rpm	200 l/sec	54 mtrs	160 l/sec at 48 mtrs
8"x6" / 360 hp	150Z-95 / GB2.0 / QSM11	900/1800 rpm	200 l/sec	84 mtrs	160 l/sec at 78 mtrs
8"x6" / 500 hp	150Z-95 / GB1.5 / QSX15	1000/1500 rpm	200 l/sec	100 mtrs	160 l/sec at 92 mtrs



Cummins Engine Powered Pumps



Slurry Pump Sets Z series 10"x8" to 12"x10"

Std scope: DPS Z series centrifugal, cantilevered, end suction, double casing, SLURRY pump, with HM hard metal wear resistant parts, inline drive to Cummins Custom Pak diesel engine, battery and leads fitted, channel steel base frame, with or without fuel tank.
 2"x1" to 6"x 4" pump – Direct coupled inline drive with flex coupling.
 8"x6" to 12"x10" pump – GB – Reduction clutchable gearbox with coupling.

Std Pump: CI/HM/HTS/EXP-PG – Cast iron body and frame, Hard Metal wear resistant chrome alloy impeller and liners, 1045 steel shaft, expeller with packed gland and SS shaft sleeve.

Options: SG or ductile iron body and frame, stainless steel or hardened stainless steel impeller and liners, 4140HTS or 420SS or 431SS shaft and sleeve, other gland seals or mechanical seals.

Applications: **High Abrasive and High Density Slurry Pumping / Mine & Quarry De-watering Dredging / Slurry Booster Line / Ash and Sludge Liquid Solids Mixture**

Size / Power	Pump / Engine	Speed Pump / Engine	Maximum Volume	Maximum Head	Nominal Duty
10"x8" / 96 hp	200 Z-37 / GB2.5 / 4BTA3.9	730/1800 rpm	220 l/sec	22 mtrs	200 l/sec at 17 mtrs
10"x8" / 120 hp	200Z-37 / GB2.0 / 6BTA5.9	900/1800 rpm	255 l/sec	34 mtrs	200 l/sec at 29 mtrs
10"x8" / 190 hp	200Z-37 / GB1.5 / 6CTA8.3	1000/1500 rpm	275 l/sec	40 mtrs	200 l/sec at 37 mtrs
10"x8" / 120 hp	200Z-65 / GB2.5 / 6BTA5.9	730/1800 rpm	260 l/sec	37 mtrs	200 l/sec at 34 mtrs
10"x8" / 245 hp	200Z-65 / GB2.0 / QSC8.3	900/1800 rpm	320 l/sec	56 mtrs	200 l/sec at 53 mtrs
10"x8" / 345 hp	200Z-65 / GB1.5 / QSM11	1000/1500 rpm	330 l/sec	66 mtrs	200 l/sec at 65 mtrs
10"x8" / 210 hp	200Z-90 / GB2.5 / 6CTA8.3	730/1800 rpm	200 l/sec	52 mtrs	160 l/sec at 48 mtrs
10"x8" / 360 hp	200Z-90 / GB2.0 / QSM11	900/1800 rpm	240 l/sec	77 mtrs	200 l/sec at 74 mtrs
10"x8" / 500 hp	200Z-90 / GB1.5 / QSX15	1000/1500 rpm	240 l/sec	92 mtrs	200 l/sec at 88 mtrs
12"x10" / 120 hp	250Z-37 / GB2.5 / 6BTA5.9	730/1800 rpm	540 l/sec	22 mtrs	300 l/sec at 18 mtrs
12"x10" / 210 hp	250Z-37 / GB2.0 / 6CTA8.3	900/1800 rpm	540 l/sec	33 mtrs	300 l/sec at 30 mtrs
12"x10" / 360 hp	250Z-37 / GB1.5 / QSM11	1000/1500 rpm	540 l/sec	40 mtrs	300 l/sec at 37 mtrs
12"x10" / 360 hp	250Z-84 / GB2.5 / QSM11	730/1800 rpm	450 l/sec	48 mtrs	300 l/sec at 43 mtrs
12"x10" / 530 hp	250Z-84 / GB2.0 / QSX15	850/1700 rpm	500 l/sec	68 mtrs	300 l/sec at 60 mtrs
12"x10" / 600 hp	250Z-84 / GB2.0 / QSK19	900/1800 rpm	550 l/sec	75 mtrs	300 l/sec at 70 mtrs
12"x10" / 360 hp	250Z-95 / GB2.5 / QSM11	730/1800 rpm	400 l/sec	54 mtrs	300 l/sec at 48 mtrs
12"x10" / 530 hp	250Z-95 / GB2.0 / QSX15	850/1700 rpm	420 l/sec	72 mtrs	300 l/sec at 66 mtrs
12"x10" / 600 hp	250Z-95 / GB2.0 / QSK19	900/1800 rpm	460 l/sec	82 mtrs	300 l/sec at 78 mtrs
12"x10" / 510 hp	250Z-113 / GB2.5 / QSX15	730/1800 rpm	450 l/sec	65 mtrs	350 l/sec at 62 mtrs
12"x10" / 600 hp	250Z-113 / GB2.0 / QSK19	800/1600 rpm	450 l/sec	77 mtrs	350 l/sec at 75 mtrs
12"x10" / 740 hp	250Z-113 / GB2.0 / QSK23	850/1700 rpm	500 l/sec	90 mtrs	350 l/sec at 86 mtrs
12"x10" / 850 hp	250Z-113 / GB2.0 / QST30	900/1800 rpm	520 l/sec	98 mtrs	350 l/sec at 96 mtrs

Larger slurry pumps up to 56"x48" available:

14"x10" / 14"x12" / 14"x14" / 16"x14" / 18"x12" / 18"x14" / 18"x16" / 20"x18" / 20"x20" / 24"x18" / 24"x20" / 26"x20" / 26"x22" / 28"x24" / 28"x26" / 30"x26" / 32"x28" / 36"x36" / 38"x34" / 56"x48"









Cummins Generator Sets



Petrol Powered Generator Sets

Standby Portable Generators - Inverter Generators - Commercial Grade Portable Generators

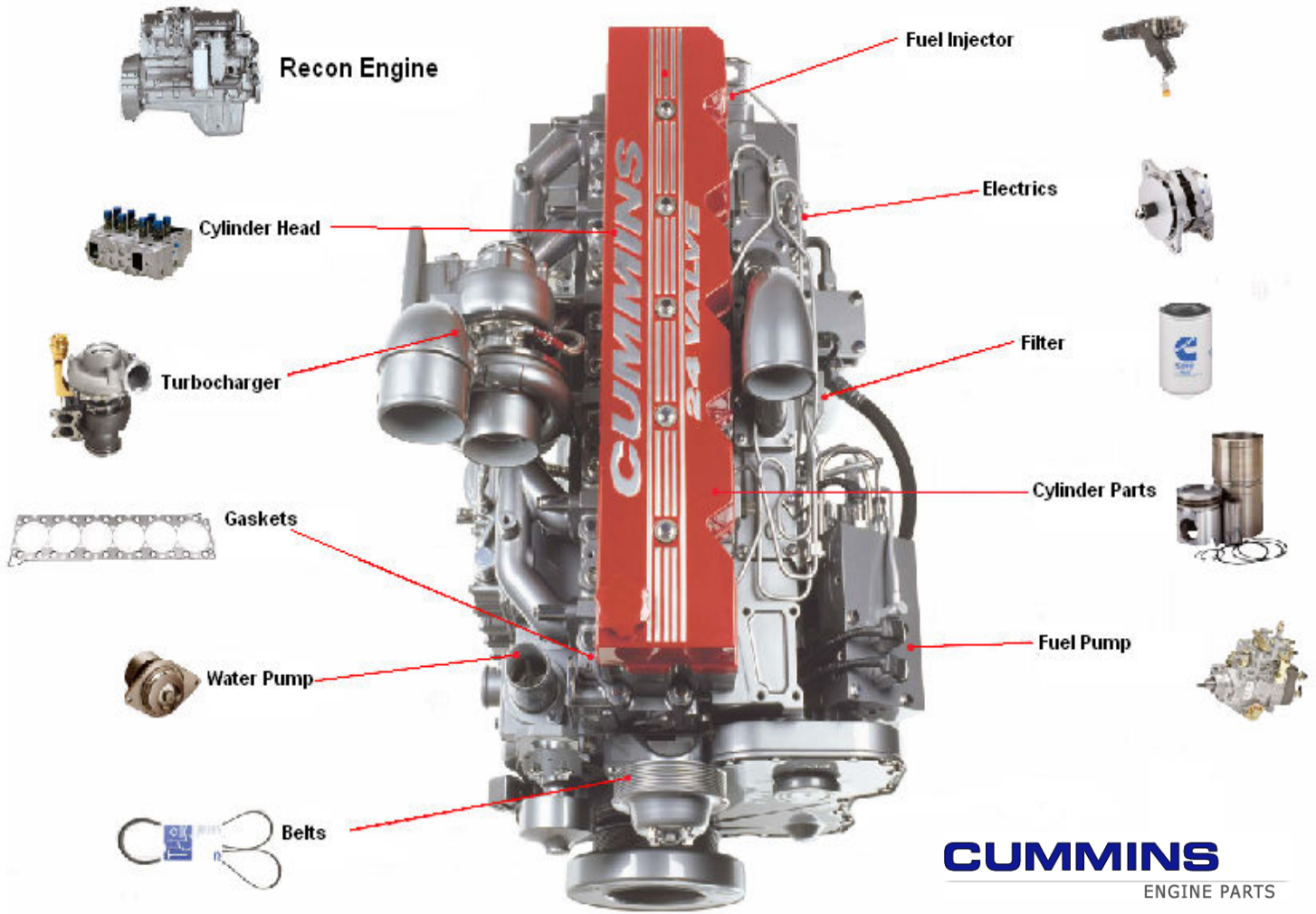
Model	Engine hp	Rated Output	Maximum Output	Fuel Tank Capacity	Range at Rated load	Noise Level	Weight kg	Dimensions L x W x H
P1100	2.4 hp	700 watts	850 watts	4 L	4.3 hours	56dB(A) at 7 m	25.0	490 x 295 x 445
P1700i Inverter	2.4 hp	1400 watts	1650 watts	4.2 L	4.0 hours	59dB(A) at 7 m	20.4	483 x 305 x 458
P2200	6.5 hp	2000 watts	2200 watts	15 L	13 hours	68dB(A) at 7 m	45.0	590 x 475 x 460
P2600	6.5 hp	2500 watts	2600 watts	15 L	8 hours	68dB(A) at 7 m	46.0	590 x 475 x 460
P3200ie Inverter	7.0 hp	2800 watts	3200 watts	10.9 L	6.5 hours	58dB(A) at 7 m	58.9	525 x 483 x 584
P4300ie Inverter	9.0 hp	3800 watts	4300 watts	12.9 L	5.3 hours	62dB(A) at 7 m	73.9	584 x 533 x 610
P4500	11.0 hp	4000 watts	4500 watts	24.6 L	10 hours	76dB(A) at 7 m	82.0	675 x 540 x 545
PX4800	9.0 hp	3500 watts	4100 watts	16.7 L	6 hours	72dB(A) at 7 m	59.9	660 x 533 x 559
PX4800e	9.0 hp	3500 watts	4100 watts	16.7 L	6 hours	72dB(A) at 7 m	78.0	813 x 533 x 559
P5000e	13.0 hp	5000 watts	5500 watts	24.6 L	9 hours	76dB(A) at 7 m	84.0	675 x 540 x 545
PX6100	11.0 hp	4400 watts	5000 watts	21.6 L	7 hours	75dB(A) at 7 m	78.0	686 x 483 x 635
PX6100e	11.0 hp	4400 watts	5000 watts	21.6 L	7 hours	75dB(A) at 7 m	81.6	686 x 483 x 635
PX7500	13.5 hp	5500 watts	6300 watts	27.6 L	7 hours	76dB(A) at 7 m	89.8	686 x 533 x 533
PX7500e	13.5 hp	5500 watts	6300 watts	27.6 L	7 hours	76dB(A) at 7 m	94.8	864 x 533 x 533
PX12000	22.0 hp	8500 watts	10000 watts	43.1 L	8.2 hours	77dB(A) at 7 m	194.3	838 x 762 x 864

 P1100	 P1700e	 P2200	 P2600	 P3200e	 P4300e
 P4500	 PX4800	 P5000e	 PX6100	 PX7500	 PX12000



Genuine Parts

Cummins Genuine Parts means uptime and uptime drives your business. Don't settle for second best - insist on Cummins Genuine Parts.



CUMMINS
ENGINE PARTS

The Fleetguard® brand, defining quality filtration products since 1963, is among the most recognized filter brands around the world. Today, the Fleetguard brand represents more than just oil filters. From the air intake system to the exhaust system, award-winning Fleetguard products and technology protect engines and the environment. With a full line of air, lube, fuel, water and hydraulic filters, exhaust systems and accessories, crankcase ventilation systems, coolants, and fuel and cooling system additives, our customers depend on Fleetguard quality to keep engines running better, cleaner and longer. Fleetguard products showcase innovative technologies which are changing the face of engine components.



DIESEL PARTS & SERVICE



Oil and Coolant



PREMIUM BLUE



For the ultimate protection of your existing or new Cummins engine, we recommend Premium Blue Extreme CJ-4 oil. Formulated for performance with today's low sulphur diesel fuel, your engine will benefit from the use of low ash CJ-4 oil. It is superior to conventional oils in the areas of protection against engine wear, piston deposits, oil foaming and aeration, soot, sludge, and high temperatures. This means less downtime and a lower cost of ownership.

Premium Blue Extreme CJ-4 is also specifically recommended for the latest generation of emissions compliant engines to the stringent ADR-80/02 standards. Whether your engine uses Exhaust Gas Recirculation (EGR) emissions technology or Selective Catalytic Reduction (SCR) after treatment - Cummins recommends Premium Blue Extreme CJ-4 diesel engine oil.

The Premium Blue engine oil range is the result of Valvoline teaming up with Cummins to develop the highest standards in diesel engine lubrication. Working together, sharing technology and product development at every level, Valvoline and Cummins have taken quality engine lubrication to a new level. Premium Blue is formulated to provide advanced performance in modern, low emission diesel engines. Premium Blue is endorsed, used and recommended by Cummins, and is an approved Cummins Engineering Standard CES20071 engine oil.

In addition Premium Blue meets or exceeds a wide range of manufacturer's and international standards. Premium Blue is a mineral based SAE 15W40 Engine Oil.

Key Benefits

- Superior wear protection
- Long-life performance
- Greater cold start protection
- Extended drain capable



To maximise these benefits use Cummins Premium Blue oils in conjunction with extended service lube filters and Cummins recommended oils analysis programs:

- TEC XL Booster
- TEC PGXL Coolant
- Cummins Extended Service Lube Filters
- Cummins recommended oils analysis programs



TEC PGXL Coolant

TEC PGXL Coolant is a fully formulated heavy duty coolant designed to eliminate the need to constantly monitor and adjust coolant chemistry at each oil change. TEC PGXL Coolant meets TMC RP329, TMC RP330, GM 6038 and ASTM D4865 low silicate specifications.

TEC PGXL Coolant contains the diesel coolant additives (DCAs) required to protect engines against corrosion, scale and liner pitting.





Additional Services

Cummins Customized Parts Catalog

Cummins can compile a parts catalog specifically for you. Unlike the generic versions of parts catalogs that support general high volume parts content; Cummins Customized catalogs contain only the new factory parts that were used to build YOUR ENGINE.

The catalog cover, as well as the content, is customized with you in mind. You can use it in your shop, at your worksite. The cover contains your name, company name, address and telephone number. Your name and engine model identification even appears on the catalog spine. Everybody will know that Cummins created a catalog specifically for you. This new catalog was designed to provide you with the exact information you need to order parts for your engine. Additional features of the Customized Catalog include

- Engine Configuration Data
- Table of Contents
- Separate Option and Parts Indexes
- Service Kits (when applicable)
- ReCon Part Numbers (when applicable)



Service Products

Cummins Service Products offers a broad array of heavy duty service tools and consumable items to help you maintain that high level of quality service you expect and deserve. These products, designed and manufactured to meet Cummins exacting standards, assure you of the ultimate in quality and performance and are backed with professional support, competitive pricing, and worldwide distribution.



The Cummins PowerStore!

This is your one-stop shop for all kinds of must-have Cummins products. We've got Cummins apparel and merchandise, parts catalogs and service manuals, and electronics.

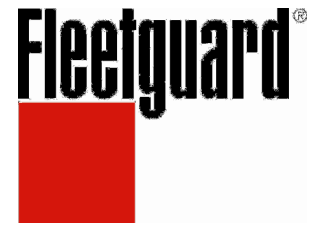
- CAPS
- SHIRTS
- JACKETS
- COLLECTABLES
- OFFICE TOOLS
- COLLECTABLES AND GIFTS
- ELECTRONIC TOOLS
- PARTS CATALOGUES
- SERVICE MANUALS



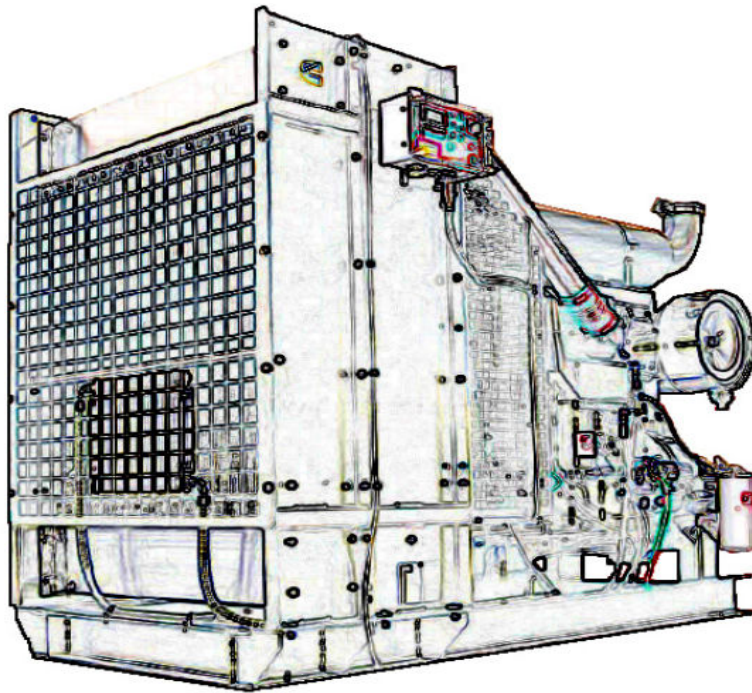
Servicing all Industrial Applications



For All Your



Industrial Engine Products



Sales - Service - Spare Parts

***Diesel Parts and Service Pty Ltd
21 Hilda Street, Hamilton
Brisbane
Qld 4007***

Phone: 07 32681062 Fax: 07 38681330

***Email: engines@dieselparts.com.au
www.dieselparts.com.au***

